

GROUND FLOOR APARTMENT IN MANILVA

MORE INFO:

Modern Apartment with Sea Views and Private Terrace – La Paloma Manilva, Costa del Sol

This elegant apartment, measuring 105.9 m² (plus a 15.08 m² terrace), offers light, comfort, and a peaceful setting just 200 m from the beach. Located in a gated community with controlled access, it features a private covered terrace with soundproof glass enclosures and a parking space included....

Price: **379.000 €**

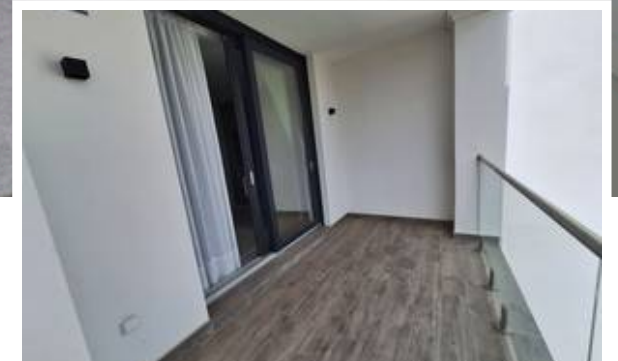
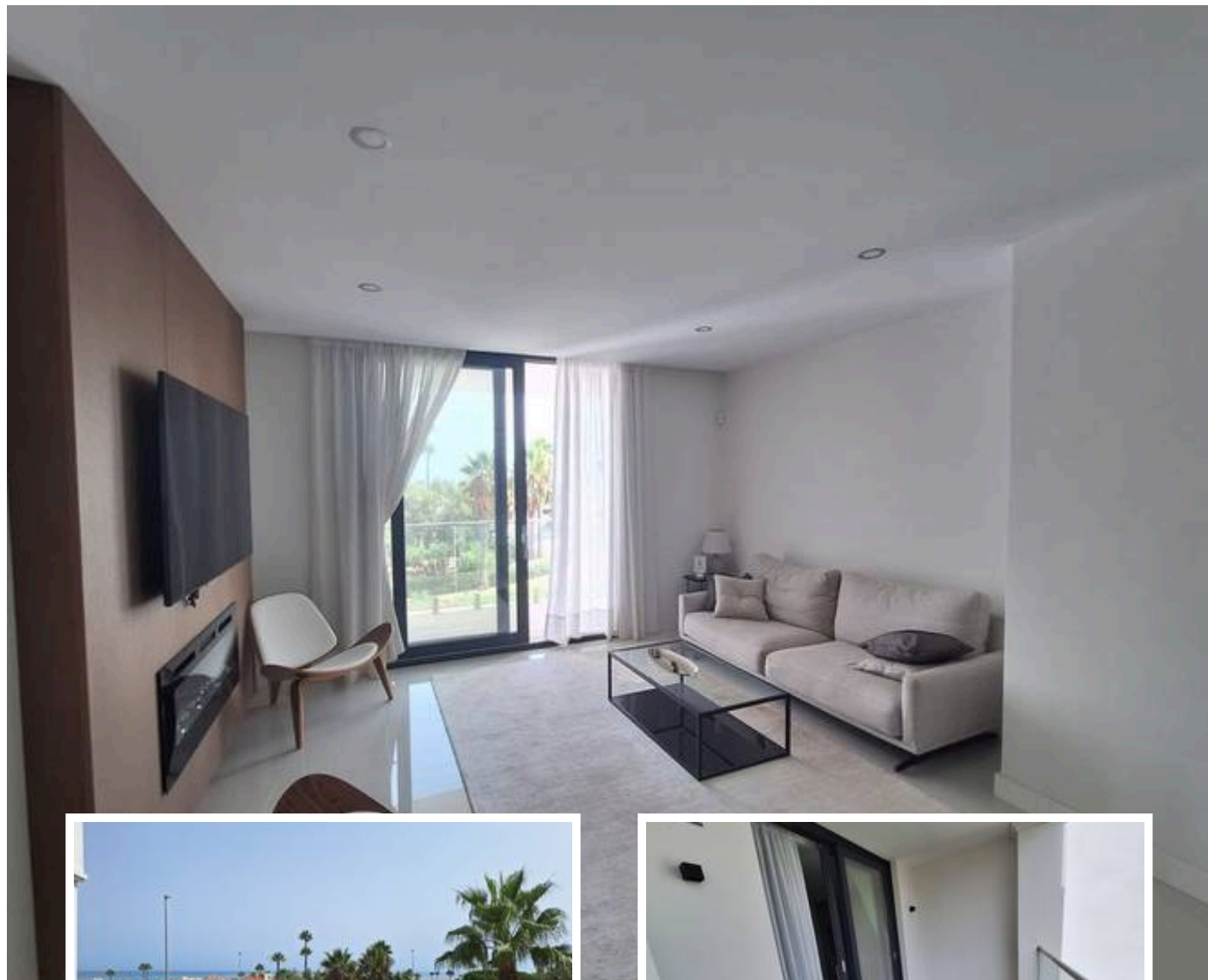
Bedrooms: 2

Bathrooms: 2

Built: 106m²

Plot:

Terrace: 15m²



Avenida Ricardo Soriano, 66

husseincak@gmail.com

+34 654 654 654